

MONTHLY MEMBERSHIP PROGRESS REPORT

LOCATION NEW JERSEY

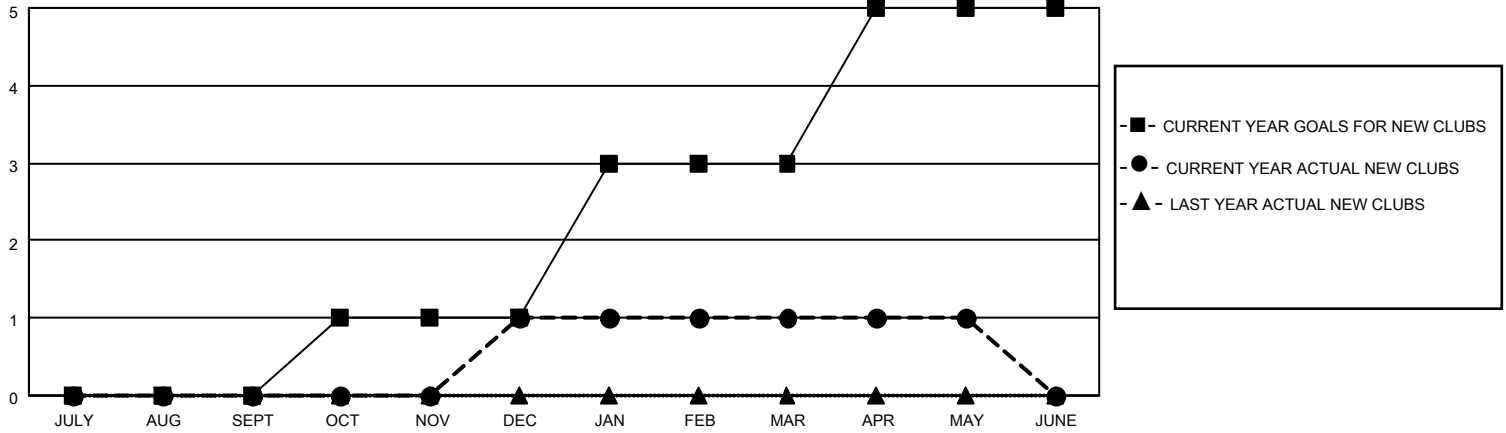
District 16 L

Results as of: 5/31/2021

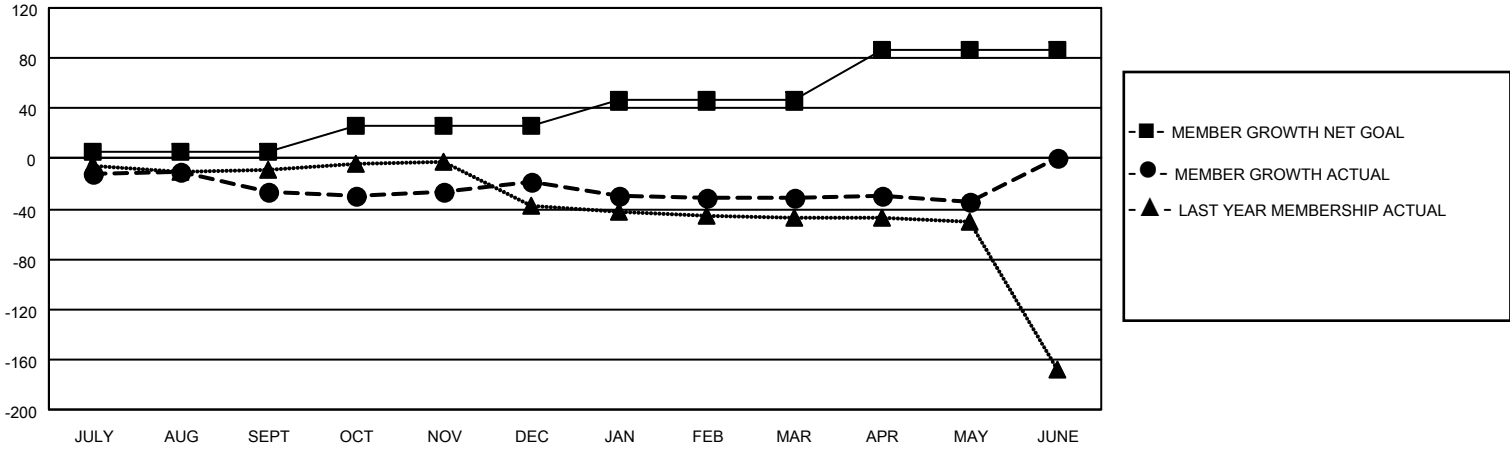
Clubs			
RESULTS FOR 2020-2021			
QUARTER	NEW CLUB GOAL	NEW CLUBS	DROPPED CLUBS
JULY/AUG/SEPT	0	0	2
OCT/NOV/DEC	1	1	1
JAN/FEB/MAR	2	0	1
APR/MAY/JUNE	2	0	0

Members			
RESULTS FOR 2020-2021			
QUARTER	MEMBER GROWTH NET GOAL	MEMBER GROWTH ACTUAL	DROPPED MEMBERS ACTUAL (including transfers)
JULY/AUG/SEPT	6	50	46
OCT/NOV/DEC	20	50	34
JAN/FEB/MAR	20	15	26
APR/MAY/JUNE	40	13	11

GOALS AND ACTUAL NEW CLUBS CUMULATIVE



GOALS AND ACTUAL MEMBERS CUMULATIVE



DROPPED CLUBS: 4	22 CLUBS OF 60 ADDED 1 OR MORE NEW MEMBERS	<u>GENDER DISTRIBUTION</u> MALE 942 (66.29%) FEMALE 479 (33.71%)
<u>DROPPED MEMBERS</u> DECEASED 24 CLUB CANCELLED 0 OTHER 93 <hr/> TOTAL 117	CLICK HERE FOR CUMULATIVE MEMBERSHIP DATA	TOTAL FAMILY UNIT MEMBERS 174 FAMILY MEMBERS PAYING HALF DUES 92